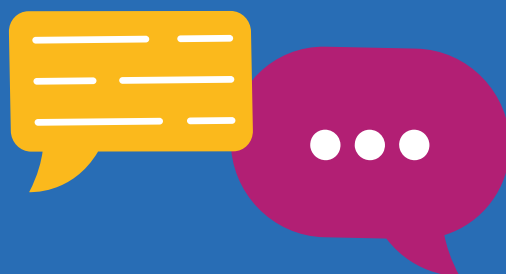


# Tell us about your experience of living with diabetes

## National Diabetes Experience Survey 2023

NHS England is running a survey to understand the experience of adults living with type 1 and type 2 diabetes diagnosed at least 12 months ago.



If you are invited, **you will be sent a letter and text message reminders** explaining how to take part.

The survey is **voluntary** and all answers are **confidential**.

If you **do not** want to take part, email [agem.diabetessurvey@nhs.net](mailto:agem.diabetessurvey@nhs.net) or call 0121 611 0020 **before 17<sup>th</sup> January 2024**. The phone line is open 8am to 6pm Monday to Friday. You will need to provide your **full name, date of birth and postcode**.

For more information: [www.diabetessurvey.co.uk](http://www.diabetessurvey.co.uk).

You will still need to contact us if you have a National Data Opt Out. The Department of Health and Social Care has confirmed that this survey is exempt. For more information: <https://digital.nhs.uk/services/national-data-opt-out/programmes-to-which-the-national-data-opt-out-should-not-be-applied>

The survey will be carried out by Ipsos UK on behalf of NHS England. An independent oversight group, including members of the public, has provided support for confidential patient information to be used to identify and invite people living with diabetes to take part in this survey.